

2019-2020 National Lecture, Seminar, Keynote & Conference Programs

Scheduling for 2019-2021

"If you're going to command or tactically engage at a structure fire: you better understand the building-there is limited margin for error on today's evolving fireground...Errors and Omissions Are Unforgiving" C.J. Naum



Christopher J. Naum, SFPE

Chief of Operations & Training, Command Institute

Consultant, NIOSH Firefighter Fatality Investigation Program

Past Vice President, International Society of Fire Service Instructors

Contributing Editor, FireEngineering.com - FireEMS Blogs:

FiregroundLeadership.com & TheFireOfficer.com

Former Contributing Editor, Firehouse Magazine and Firehouse.com

A Fire Officer's Guide for Today's Buildings on Fire

Today's fireground, buildings and occupancies present increasing challenges that have redefined strategic and tactical fireground operations and impact these operations on a wide variety of levels that often include adverse compartment fire conditions, structural compromise, collapse and predictable building performance. Presenting insights on building construction for today's fire service, the primary objective of this program is to increase awareness and understandings and promote new skill sets in the fundamentals of building construction, architecture, engineering and design that directly impact firefighting and command operations at structure fires. A discussion of emerging trends in Building Construction Systems, Occupancy Risks, Collapse & Compromise Characteristics, Methods & Materials, Design, fire protection and Fire Dynamics related to building anatomy will be presented. New for 2019 are insights on new Mass Timber and Cross Laminated Timber (CLT) construction and podium and doughnut construction designs.

Reading the Building and Occupancy Risk: Building FACTS

Today's buildings and occupancies continue to present unique challenges to command and operating companies during combat structural fire engagement. Building and occupancy profiling, identifying occupancy risk versus occupancy type, construction methods, features, systems and components require new skill sets in reading the building and implementing predictive occupancy profiling for today's professional volunteer firefighters, company and command officers for effective and efficient fireground operations. Incorporating the Buildingsonfire FACTS concept for First-Arriving Construction, Tactics and Safety, this program provides an overview of the methodology and process to increase operational effectiveness and ensure critical building factors are identified, assessment and monitored throughout the incident.

Building Construction for Today's Fireground

Today's buildings and occupancies present increasing challenges that have redefined strategic and tactical fireground operations and impact these operations on a wide variety of levels that often include adverse compartment fire conditions, structural compromise, collapse and predictable building performance. Presenting insights on building construction for today's fire service, the primary objective of this program is to increase awareness and understandings and promote new skill sets in the fundamentals of building construction, architecture, engineering and design that directly impact firefighting operations at structure fires. Five fundamental areas integrating building and construction methodologies, will be threaded throughout the program related to Construction Systems, Occupancy Risks, Collapse & Compromise Characteristics, Methods & Materials and Fire Dynamics related to building anatomy, vintage and intrinsic building and occupancy characteristics assimilating comprehensive case studies, history repeating events, research findings and emerging fire suppression theory will be presented.

The Challenge of Firefighting Operations in Mega-Mansions & Large Area Residential

Today's residential homes are being built larger than ever and in all community settings from rural to suburban to urban. These occupancies present significant risks and operational challenges to commanders and firefighters, who must have increased knowledge and more skill sets to employ the operational models that must be used in these structures. The program provides leading insights on building construction, engineered systems, design configurations, and characteristics of common mega-mansions--homes ranging from 4,000 to 40,000 square feet, with operational focus on the 6,000-18,000 SF residential footprint.

Operational Excellence on Today's Demanding Fireground

Integrated leading insights and emerging concepts and methodologies related to fireground tactical theory, suppression needs for effective combat operations and methodologies for operational excellence and firefighter safety. This is an engaging and thought-provoking program that challenges conventional fire service paradigms and explores leading edge fire service discussion points from across the American Fire Service profession with new strategic, tactical and operational considerations due to building construction, extreme compartment fire behavior and occupancy risks and the demands associated with today's evolving and demanding fireground.

Fireground Leadership for Command & Company Officers 2019 (2020)

Presenting insights into emerging concepts and methodologies related to today's unique challenges for combat structural fire engagement requiring new strategic, tactical and operational modeling due to rapid fire behavior, building construction and occupancy risk and the need for new training and operational requirements for firefighters, company and command officers. Fireground Leadership has many forms and layers: identify the mission critical elements required today to meet tomorrow's incident responses and demands that will directly influence operational success. Fire Chiefs, officers and firefighters operating at structure fires must have an understanding of the building, the compartment and the fire company member's skills, knowledge and abilities to effectively integrate and mitigate an incident that integrates safe and aggressive firefighting, predictive risk management and tactical discipline associated with three primary areas associated with the Building, Compartment, Company for operational excellence.

Buildings on Fire: Tactical Risks for the First-Due

If you're going to command or tactically engage at a structure fire: you better understand the building; there is limited margin for error on today's evolving fireground--Errors and Omissions are Unforgiving. Arriving companies and personnel at today's structure fires must be able to rapidly and accurately identify key elements of a building, process that data based upon a widening field of variables present on today's evolving fireground and implement timely actions that address prioritized actions requiring intervention. This program will present tactical risks and key considerations for the First-Due Company, Company Officer and Commander affecting and influencing operational risk management, command and tactical safety and tactical protocols based upon occupancy risks, reading the building and adaptive management principles. Integrated into the program are key LODD lessons and learnings for today's demanding fireground.

Buildings on Fire: Lessons from the Fireground 2019 (2020)

This program will present and lead through past History Repeating (HRE) Events and present leading insights and findings from pertinent and recent case studies, NIOSH LODD Investigative Reports and After Actions Reports from select incidents for a facilitated examination of apparent and contributing factors and an analysis and review of recommendations and actions to preclude similar events on the local and regional level. Elements of effective and adaptive fireground leadership and the hard lessons learned will be presented in this highly interactive program. Select case studies are reviewed and applied to identify gaps and vulnerabilities. Lessons from the fireground resonate with recommendations and actions that all fire departments and personnel must recognize and implement in future fireground operations in order to reduce operational risks and improve incident mitigation and structure fires.

Rebooting Old School Principles for Today's Demanding Fireground

Much is being debated related to tactics, methodologies, practices and the learnings gleaned from emerging research and insights. What has today's fireground evolved into when we talk about traditional firefighting operations and engagement? Has it remained constant--Has it changed? Do we continue to operate utilizing time proven methodologies or are we prepared to identify new adaptive methodologies and practices? The demands on today's fire service require us to look back in order to progress forward. This program reboots the principles and operational practices of modern firefighting while integrating progressive models that build upon the fire company's skills, knowledge and abilities to effectively mitigate an incident that with aggressive firefighting, predictive risk management and tactical discipline associated with operational excellence.

Adaptive Fireground Management for the Command & Company Officer

There is an immediate need for today's operating command and company officers to increase their foundation of knowledge and insights related to modern building construction & engineering, fire dynamics, occupancy risk and fire protection engineering to align traditional and conventional strategic operating methodologies and proven past practices to modern research-based tactics in order to safeguard companies and personnel and increase operational capabilities. Structural fire engagement requires a balance of tactical discipline, tactical patience and predictive insights of building construction & engineering incorporating an Adaptive Fireground Management (AFM) model.

Developing Fire Literacy and Behavioral-based Risk Management in Personnel

A look at Today's demanding incidents and fireground and how that translates to increased needs for advanced training, skill sets and emergency incident operational models to address expanding operational risks, escalating incident & scene intelligence, expanded proficiencies, discipline and command resiliency with the correlating need for adaptive fire management, tactical models and optimized technical and operational capabilities from all ranks and company assignments.

The Influence of Building Construction on Command Decision-Making

Building Construction, Occupancy Types & Risks along with Building Anatomy and the Predictability of Building Performance under fire conditions have a profound influence on the management of operations, identification of tactical protocols and deployment of resources. Understanding key inherent building performance characteristics and their relationships and variables in Command Decision-making methodologies and practices is fundamental to firefighting and incident management on today's evolving and demanding fireground.

Fireground Leadership; *Rebooting Leadership: From the Station to the Streets*

Today's demanding fireground leaves negligible margin for errors or omissions requiring new skill sets, proficiencies and high accountability and tactical deployments executed with the highest degree of proficiencies and skill sets under the most challenging of operational demands and personnel risks. Leadership starts at the station and transitions to the streets and incident scene requiring new skill sets, awareness, insights and operational adaptiveness. Leadership and Operations are integral and are fundamental to all facets; on and off the fireground. This high focused and high impact program will assimilate three key functional areas that affect today's emerging and practicing company and command officers and firefighter in the areas of *Station Leadership, Training and Preparedness and Operational Leadership on today's evolving fireground.*

Five Star Command and Firefighter Safety

This program will present the concepts and methodologies of Five Star Command™ and the five (5) fundamental core relationships of: Building Construction, Risk Management, Firefighter Behaviors, Incident Operations and Situational Safety. The concept of Five Star Command™ will present these five fundamental core elements along with the five points of excellence within each domain that provide an intelligent and safe approach towards unified fireground safety, risk reduction, operational superiority and company integrity and the template for focused training and curriculum development for today's evolving fireground. The program presents a new concept towards an integrate approach to enhanced incident operations at structure fires adding values towards an improved fire service safety culture. Presenting emerging and timely insights affecting a wide latitude of audience interests, experience levels and relevancy to work assignments in the areas of incident fireground operations from strategic, tactical and task levels of operations, the presentation concepts, methodologies and materials have relevancy to all operational levels of the fire service. The Five Star Command™ model integrates with the emerging methodologies incorporating Adaptive Fireground Management concepts.

Rebooting the New Millennium Company and Commanding Fire Officer

A thought-provoking presentation on the increasing demands for today's emerging, practicing or future Firefighter, Company and Command Officers in the challenge on how to meet tomorrow's demands today through self-determination and personal accountability on staying relevant and technically competent. A look at the emerging fireground in 2019 and beyond will be examined and how that translates to the increased needs for advanced training, skill sets and operational models to address operational risks, escalating knowledge, skill sets, proficiencies, discipline, fortitude and resiliency and the need for adaptive tactics and operations from all ranks and company assignments.

The Impact of Building Construction on Today's Fireground

The Impact of Building Construction on Today's Fireground cannot be underestimated. Building Construction is as fundamental to Structural Firefighting as Water is to Fire Suppression but has become relegated to a lower level of operational significance and importance. Today more than ever, understanding and comprehending building construction and its anatomy and the effects of fire dynamics on fire suppression operations is a must. This program examines the complexity of today's building construction, emerging technology and applied engineering that are shaping today's new buildings and changing older buildings that demand greater insights when addresses buildings on fire on today's fireground.



Emerging Trends in Building Fires, Construction and Fire Services Operational Impacts

A discussion of high-profile fires and international incidents that have unique or correlating commonalities, or trends that resulted in operational or management challenges.

Senior Fire Officer's Guide for Today's Buildings on Fire

Presenting insights on building construction for today's fire service, the primary objective of this program is to increase awareness and understandings in the fundamentals of building construction, architecture, engineering and design that directly impact firefighting and command operations at structure fires based on emerging construction systems. A discussion of emerging trends in Mass Timber and Cross Laminated Timber (CLT) construction and podium and doughnut construction designs related to Building Construction Systems, Occupancy Risks, Collapse & Compromise Characteristics, Methods & Materials and Design will be presented.

Identification and Management of Collapse Zones for Senior Officers

The identification and management of collapse zones continues to be one of the most leading contributing causes to firefighter injuries. Continuing Occupancy risks, inherent predictable building performance and building materials, methods and materials of construction and the ongoing impacts from renovations, adaptations, alterations, conversion and incorporation of engineered systems in shell construction require defined operational practices, enhanced command management and greater company officer and company discipline and control. Influential national case studies will be reviewed.

Lessons and Best Practices from the Fireground: Residential & Commercial Incidents

Residential and Commercial occupancies and their buildings and structures continue to represent the majority of incident responses both in terms of call volume, deployment risks and operational demands. These occupancies and buildings present varying operational risks and challenges that affect both the civilians that reside, occupy or work within these settings and the firefighters who must mitigate and stabilize the fire incident. Evolving building sciences, advances in architecture, engineering and emerging insights from fire dynamics demand constant study, reviewing past incident performance, gaps and outcomes. History Repeating Incident Events (HRE) illustrate the lessons from past adverse events that are repeated reinforce the need for continued focus and operational refinements and learnings to be implemented. Lessons and Best Practices from select residential & commercial fireground incidents provides perspective and insights to improve preparedness, training and operational capabilities across numerous functional domains.

"Today's buildings and occupancies present increasing challenges that have redefined strategic and tactical fireground operations and have changed the rules of engagement in structural fire incidents." CJ Naum



We are interested in partnering, sponsorship and hosting opportunities with your organization. A number of timely and topical programs are available for 3-4-hour presentation formats as well as full day 6-8-hour seminar programs for a single standalone program or as part of a concentrated and focused state-wide delivery campaign. We have recently completed a similar state-wide program delivery with FASNY in New York State.

Executive level briefings for Executive Office, Command or Training Staff for shorter, concise content presentations can be offered as well. All programs and offerings can be developed and presented for multiple shifts and company rotations to best accommodate large battalion, division or department in-service or special command groups, teams or companies.

Select programs are available for delivery throughout the United States and North America. Additional Select Programs are available for Global International Delivery in the UK, Ireland, Scotland, Europe, Middle East, Asia, India, Japan and Australia. Contact us for Program Details.



Coming Later in 2019 and 2020

- **Understanding Mass Timber Construction and the Fire Service Impact**
- **Operational Insights on Emerging Cross Laminate Timber Construction (CLT) Construction and Occupancies**
- **Operations and Tactical Considerations of Podium, Doughnut and Wrap Construction**
- **Engineered & Lt. Weight Construction & Systems: Fireground Operations & Tactics**

Buildingsonfire: Building Construction Series

These programs can be developed and delivered in a wide variety of content modules from 2, 3 or 4-hour modules to full day workshop or seminar sessions. All programs and offerings can be developed and presented for multiple shifts and company rotations to best accommodate large battalion, division or department in-service or special command groups, teams or companies and can be scheduled for delivery on a day or evening training drill session with a condensed format and content. Executive level briefings for Executive Office, Command or Training Staff for shorter, concise content presentations can be offered as well.

- **Engineered & Lt. Weight Construction & Systems: Fireground Operations & Tactics**
- **Fireground Operations at Commercial & Big Box Occupancies**
- **Operational Safety at Buildings under Construction**
- **Operations at Residential Fires on Today's Fireground**
- **Command Institute's Fireground Leadership Series**
- **Operations & Tactics at Garden Apartment & Townhouses & Multiple Occupancies**
- **Firefighting Operations on Main Street: Construction, Command Tactics**
- **Firefighting Principles and Practices in Buildings of Ordinary Construction**
- **Command and Control of Large-Scale Fires on Main Street**
- **Firefighting Operations in Lofts, Conversations and Type III/IV Occupancies**
- **Roof Construction for Truck Company Operations**
- **Understanding Mass Timber Construction**
- **Operational Insights on Cross Laminate Timber Construction (CLT) Construction and Occupancies**
- **Operational Insights on Podium Construction**
- **Emerging Trends in Building Construction and Operational Impacts**
- **Construction Site Fires: Insights & Analysis of Major Fires in the United States**
- **Trends in High-rise Construction; Mass Timber, Plyscrapers and the Trends**



Special Program Options

Full Single or Two-Day Program:

Fireground Leadership and Operational Excellence on Today's Fireground

Today's buildings and occupancies present increasing challenges that have redefined strategic and tactical fireground operations and impact these operations on a wide variety of levels that often include adverse compartment fire conditions, structural compromise, collapse and predictable building performance. Integrated leading insights and emerging concepts and methodologies related to fireground tactical theory, suppression needs, building construction for today's fire service and methodologies for operational excellence and firefighter safety. This is an engaging and thought-provoking program that challenges conventional fire service paradigms and explores leading edge fire service discussion points from across the American Fire Service profession with new strategic, tactical and operational considerations due to building construction, extreme compartment fire behavior and occupancy risks and the demands associated with today's evolving and demanding fireground. Five fundamental areas integrating building and construction methodologies, will be threaded throughout the program related to Construction Systems, Occupancy Risks, Collapse & Compromise Characteristics, Methods & Materials and Fire Dynamics related to building anatomy, vintage and intrinsic building and occupancy characteristics assimilating comprehensive case studies, history repeating events, research findings and emerging fire suppression theory will be presented.

Program Modules:

- Leadership: From the Station to the Streets: Key Insights on Effective Leadership
- Lessons from the Fireground: What are we learning?
- Adaptive Fireground Management: Leadership on Today's Evolving Fireground
- Fire Officer's Guide for Today's Buildings on Fire
- Building Construction and Occupancy Risk: Managing Risks and OPS
- Tactical Risks for the First-Due
- Tactical Discipline and Command Resilience: The New Standards
- Operational Excellence: Defining the New Fireground

Full Single or Two-Day Program:

Buildings on Fire

If you're going to command or tactically engage at a structure fire: you better understand the building; there is limited margin for error on today's evolving fireground-Errors and Omissions are Unforgiving. Today's buildings and occupancies present increasing challenges that have redefined strategic and tactical fireground operations and impact these operations on a wide variety of levels that often include adverse compartment fire conditions, structural compromise, collapse and predictable building performance. This program will present tactical risks and key considerations for the First-Due Company, Company Officer and Commander affecting and influencing operational risk management, command and tactical safety and tactical protocols based upon occupancy risks, reading the building and emerging adaptive management principles.

Program Modules:

- Fire Officer's Guide for Today's Buildings on Fire
- Building Construction: Tactical Risks for the First-Due
- Buildings on Fire: Lessons and Learning from the Fireground
- Adaptive Fireground Management on Today's Fireground

Featured Seminar Programs

We are interested in partnering, sponsorship and hosting opportunities with your organization. A number of timely and topical programs are available for 3-4-hour presentation formats as well as full day 6-8-hour seminar programs for a single standalone program or as part of a concentrated and focused state-wide delivery campaign. We have recently completed a similar state-wide program delivery with FASNY in New York State.

Workshop or seminar formats for weekday or weekend delivery or as part of a pre-conference or special session conference, academy or fire school offering are available.

Fire Officer's Guide for Today's Buildings on Fire



Today's buildings and occupancies present increasing challenges that have redefined strategic and tactical fireground operations and impact these operations on a wide variety of levels that often include adverse compartment fire conditions, structural compromise, collapse and predictable building performance. Presenting insights on building construction for today's fire service, the primary objective of this program is to increase awareness and understandings and promote new skill sets in the fundamentals of building construction, architecture, engineering and design that directly impact firefighting and command operations at structure fires. A discussion of emerging trends in Building Construction Systems, Occupancy Risks, Collapse & Compromise Characteristics, Methods & Materials, Design, fire protection and Fire Dynamics related to building anatomy will be presented. New for 2019 are insights on new Mass Timber and Cross Laminated Timber (CLT) construction and

podium and doughnut construction designs.

Building Construction: Tactical Risks for the First-Due



If you're going to command or tactically engage at a structure fire: you better understand the building; there is limited margin for error on today's evolving fireground-Errors and Omissions are Unforgiving. Arriving companies and personnel at today's structure fires must be able to rapidly and accurately identify key elements of a building, process that data based upon a widening field of variables present on today's evolving fireground and implement timely actions that address prioritized actions requiring intervention. This program will present tactical risks and key considerations for the First-Due Company, Company Officer and Commander affecting and influencing operational risk management, command and tactical safety and tactical protocols based upon occupancy risks, reading the building and adaptive management principles

Building Construction for Today's Fireground



Today's buildings and occupancies present increasing challenges that have redefined strategic and tactical fireground operations and impact these operations on a wide variety of levels that often include adverse compartment fire conditions, structural compromise, collapse and predictable building performance. Presenting insights on building construction for today's fire service, the primary objective of this program is to increase awareness and understandings and promote new skill sets in the fundamentals of building construction, architecture, engineering and design that directly impact firefighting operations at structure fires. Five fundamental areas integrating building and construction methodologies, will be threaded throughout the program related to Construction Systems, Occupancy Risks, Collapse & Compromise Characteristics, Methods & Materials and Fire Dynamics related to

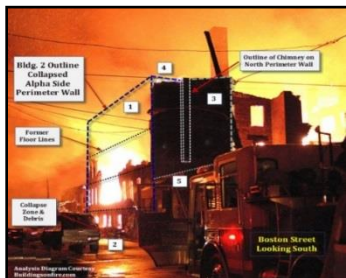
building anatomy, vintage and intrinsic building and occupancy characteristics assimilating comprehensive case studies, history repeating events, research findings and emerging fire suppression theory will be presented.

Reading the Building and Occupancy Risk: Building FACTS



Today's buildings and occupancies continue to present unique challenges to command and operating companies during combat structural fire engagement. Building and occupancy profiling, identifying occupancy risk versus occupancy type, construction methods, features, systems and components require new skill sets in reading the building and implementing predictive occupancy profiling for today's professional volunteer firefighters, company and command officers for effective and efficient fireground operations. Incorporating the Buildingsonfire FACTS concept for First-Arriving Construction, Tactics and Safety, this program provides an overview of the methodology and process to increase operational effectiveness and ensure critical building factors are identified, assessment and monitored throughout the incident.

Buildings on Fire: Lessons from the Fireground 2019 (2020)



This program will present and lead through past History Repeating (HRE) Events and present leading insights and findings from pertinent case studies, NIOSH LODD Investigative Reports and After Actions Reports from select incidents for a facilitated examination of apparent and contributing factors and an analysis and review of recommendations and actions to preclude similar events on the local and regional level. Elements of effective and adaptive fireground leadership and the hard lessons learned will be presented in this highly interactive program. Select case studies are reviewed and applied to identify gaps and vulnerabilities. Lessons from the fireground resonate with recommendations and actions that all fire departments and personnel must recognize and implement in future fireground operations in order to reduce operational risks and improve incident mitigation and structure fires.



Keynotes and Special Topical Select Listings, others available

- Rebooting the American Fire Officer
- Fading Lessons and the Forgotten Past
- Gaining the Tactical Edge: Are you prepared?
- Tactical Discipline and Command Resiliency
- Developing the Next Generation of Fire Officers
- The New Rules of Combat Fire Engagement 2019
- Operational Excellence on Today's Evolving Fireground
- Adaptive Leadership on Today's Demanding Fireground
- Understanding Today's Fireground; Challenges and Opportunities
- Today's Evolving Fireground: Are You Ready to Make the Necessary Changes?
- Operational Excellence: Developing New Skill Sets & the Next Generation of Leaders
- Understanding the Modern Fireground; If You're going to Lead, You Better Learn
- Redefining Combat Fire Engagement for the Company and Command Officer
- Rebooting Old School Principles for Today's Demanding Fireground
- The Company and Command Officer in 2019 and Beyond
- Lessons from the Fireground: Or the Sounds of Silence
- The Professional Volunteer Fire Officer & Commander
- Lessons from the Fireground: What are we learning?
- Fireground Leadership: Where do you stand?
- Leadership: From the Station to the Streets
- The Fire Officer in 2019 and Beyond



Programs- Taking the Classroom to the Field

Fire Officer's Guide for Today's Buildings on Fire

Today's buildings and occupancies present increasing challenges that have redefined strategic and tactical fireground operations and impact these operations on a wide variety of levels that often include adverse compartment fire conditions, structural compromise, collapse and predictable building performance. Presenting insights on building construction for today's fire service, the primary objective of this program is to increase awareness and understandings and promote new skill sets in the fundamentals of building construction, architecture, engineering and design that directly impact firefighting and command operations at structure fires. A discussion of emerging trends in Building Construction Systems, Occupancy Risks, Collapse & Compromise Characteristics, Methods & Materials, Design, fire protection and Fire Dynamics related to building anatomy will be presented.

Fireground Operations at Buildings of Ordinary & Heavy Timber Construction: Old School Hazards for Today's Buildings and Risks

A fundamental building type that has profound operational considerations on the fireground, and commonly found in nearly all jurisdictions and response areas throughout the United States. This program goes beyond the cursory discussions of "main street" unreinforced masonry (URM) and reinforced masonry (RM) construction and occupancies but expands and explores the complexities of this heritage and legacy construction system and their renovations, adaptive reuse, make-overs and fireground operations. An overview of construction systems, materials and methods, inherent building characteristics, predictability of building performance, operational considerations, strategies and tactics with a focus on operational excellence and firefighter safety. Key Building Anatomy features, design and current architectural and design systems will be explored on this often-neglected building system. Collapse zone identification and management with integrated case studies and discussion on adaptive use, integrated engineering components and how to effectively assess and operate at buildings of ordinary (type III) and heavy timber/mill & semi-mill (type IV) construction

Taking it to the Streets

*Both of these programs can be offered as a Unique Offering that combines both a **Classroom delivery AND Field Time**. Based on local building settings, main street or special districts, these building construction program would start in the classroom with a formal presentation and then transition to the streets for a walking lecture tour looking at buildings, characteristics, features and conditions first-hand while gaining invaluable operational and command insights that affect tactical and operational decision-making and risk management.*



Program Format

All programs incorporate rich multimedia, exceptional graphics and stimulating visuals that combine the appeal of the visually stimulating images while integrating content that provides the latest in research, data, insights, information and methodologies. These programs have been designed and developed to incorporate the latest training delivery concepts and methodologies while integrating current and emerging technology, social media platforms, eMedia and internet-based content management systems and material in order to provide unparalleled fire service curricula, training and education.

- Interactive facilitated lecture with discussion format
- Fully integrated Lecture with rich multi-media program
- Single or Dual Projection Screen(s) format
- LCD Projection with integrated sound

Professional Presentation Fee

Program presentation costs vary and are based on selected program(s), duration and content.

Travel, transportation and lodging costs are client and program(s) determined and are subject to change based on industry trends and fluctuations. Contact us.

Advanced scheduling is highly suggested as are tentative program hold dates. (Reservation deposit required).

Programs are available for weekday, evening and weekend as well as multiple-shift/platoon deliveries.

We will work closely with your organization to achieve mutual beneficial & favorable outcomes. Some customization of content for local-regional pertinence is available upon inquiry.

We are highly receptive towards developing programs around an FD, agency or organizational Hosted event for local, regional or state-wide delivery.



Point of Contact Information:

Chief Christopher J. Naum, SFPE

Cell: 01 315-247-7327 Alternate: 01 315-622-5578

Email: Primary: Cnaum@twcny.rr.com Secondary: Christopher.naum@gmail.com

Conference and Seminar Keynote Opening or Closing Presentations
FD, Agency, Associations or Conference, Preconference Program and Session Programs
Conference Seminars and Lecture Training Programs; Based on Duration, Type and Specifics
FD, Agency, Association or Organizational Hosting and Facilitation Welcomed;
Contact us to Discuss Opportunities and Scope

- Buildingsonfire.com
- FiregroundLeadership.com
- TheFireOfficer.com
- [Buildingsonfire on Facebook](#)
- Twitter [@commandsafety](#) [@buildingsonfire](#)



Short Form Instructor Biography



Chief Christopher J. Naum, SFPE

Chief of Operations & Training, the Command Institute (USA)

Technical Consultant, NIOSH Firefighter Fatality Investigation Program

A 43-year fire service veteran and a highly regarded national and international instructor, author, lecturer and fire officer, he is a distinguished authority on building construction issues affecting the fire and emergency services and has traveled throughout the United States and internationally delivering training programs on building construction, command management and operational safety. A former Adjunct Instructor with the National Fire Academy, he is a past member of the Board of Directors, IAFC Safety, Health & Survival Section and a past Vice-President with the International Society of Fire Service Instructors. He recently traveled with a prestigious contingent of international instructors to the Kingdom of Bahrain and presented as part of the IAFC's First

International Fire Operations Symposium and serves on the faculty of the IAFC's Regional Officer Development Programs (ODP) and Kean University's NJDFS Programs. He has been lecturing nationally for over 34 years, including lecturing at FDIC since 1986 and Firehouse Expo since 1988.

A former architect and fire protection engineer, he was the 1987 ISFSI George D. Post National Fire Instructor of the Year. He is the Chief of Training for the Command Institute (NY|DC) is a Consultant to NIOSH (USA) Firefighter Fatality Investigation & Prevention Program and a well-respected Tactical Theorist, researching and developing emerging and cutting edge strategic and tactical operational methodologies, concepts and practices based on fire research to improved fireground operations and firefighter safety and is active in numerous national & international fire service agenda programs and committees. He is the Executive Producer of the Buildingsonfire.com, FiregroundLeadership.com and Co-produces TheFireOfficer.com. His monthly national radio program, [Buildingsonfire's Taking it to the Streets](#) is hosted on FireEngineering.com's BlogTalk Radio.

Instructor Biography



Christopher J. Naum, SFPE

Chief of Operations & Training, Command Institute | Tactical Theorist
Technical Consultant, NIOSH Firefighter Fatality Investigation Program
Past Vice President, International Society of Fire Service Instructors
Contributing Editor, FireEngineering.com - FireEMS Blogs: FiregroundLeadership.com & TheFireOfficer.com. Frm. Contributing Editor, Firehouse Magazine & Firehouse.com

A 43-year fire service veteran and a highly regarded national instructor, author, lecturer and fire officer, he is a distinguished authority on building construction issues affecting the fire and emergency services and has traveled throughout the United States and internationally delivering training programs on building construction, command management and operational safety. He has been lecturing and instructing throughout the United States and internationally for over thirty-three years. His previously service included Fire Command, Fire Protection & Safety at a US nuclear power plant, over twenty years in field operations & suppression as a commanding company officer in New York and Training & Fire Academy and College academic curricula administration and management and spent over thirty-two years as a volunteer firefighter and officer.

He is the Chief of Training for the Command Institute and served as a Vice President with the International Society of Fire Service Instructors and a past member of the Board of Directors, IAFC Safety, Health & Survival Section. He was a 27 year Contributing Editor with Firehouse Magazine and Firehouse.com where he authored the Buildings on Fire column and Buildingsonfire series, he served as an adjunct Instructor with the National Fire Academy and was a past National Fallen Firefighter Foundation, Everyone Goes Home Firefighter Safety Advocate. A former architect and fire protection engineer he was the 1987 ISFSI George D. Post National Fire Instructor of the Year and is a Technical Consultant to the NIOSH Firefighter Fatality Investigation and Prevention Program and Firefighter LODD Reports. He serves on the faculty of the IAFC's Regional Officer Development Programs (ODP) and Kean University's NJDFS Programs. He has been lecturing nationally for over 34 years, including lecturing at FDIC since 1986 and Firehouse Expo since 1988.

He is a well-respected Tactical Theorist, researching and developing emerging and cutting edge strategic and tactical operational methodologies, concepts and practices based on fire research to improved fireground operations and firefighter safety and is active in numerous national & international fire service agenda programs, committees and initiatives that is helping to define the fire and emergency services in training and operations in the years ahead.

Naum is Executive Producer of the Buildingsonfire Series and Productions that include the highly acclaimed website, Buildingsonfire.com dedicated to building construction, command risk management and firefighter safety and is also the executive producer of two highly regarded eMedia web sites on PennWell's FireEMSblogs.com & FirefighterNation.com that include FiregroundLeadership.com and TheFireOfficer.com and manages numerous interactive eMedia programs on Facebook, Twitter and FirefighterNation.com. He hosts the monthly radio program, Taking it to the Streets on FireEngineering.com's and Blogtalkradio.com.

He has developed, authored and is publishing a groundbreaking fireground management model-Adaptive Fireground Management™ (AFM) and an integrated training curricula model -Five Star Command™ integrating building construction, risk management and firefighter safety with the latest insights on fire behavior, fire dynamics and tactical modeling and has published new insights on a Tactical Risk Management Model for firefighting operations and is preparing to launch a new methodology on Reading the Building Profiling called the Buildings on Fire FACTS™ process series.